



CITY OF LEMOORE

Community Profile

Lemoore is governed by a five-member city council that is responsible for approving all legislation and formulating city policies. The council selects one of its members to serve as the mayor, who presides at meetings and represents the city in all official matters and at official functions.

Geography and Climate

Lemoore is located in the San Joaquin Valley in the northeast portion of Kings County. According to the U.S. Census Bureau, the city encompasses 8.4 square miles. The terrain is relatively flat and underlain by well-drained, sandy loam soils. The elevation of the city is 221 feet above sea level. Precipitation averages about 8.4 inches per year. Average high temperature in the summer is 97°F and in the winter is 50°F. The Kings River is located to the west of Lemoore between the city and the Lemoore Naval Air Station.

History

Dr. Lovern Lee Moore first made his home in what was western Tulare County, California (now the city of Lemoore) in April 1871. It was near Tulare Lake, then the largest body of water in central California. By the time Moore arrived, scores of individual farms (mostly sheep and grain) dotted the landscape. Moore brought together the surrounding farm families and secured a post office and a local center for conducting business. Moore also established the first real estate development in the district and laid out and named the streets. Lemoore became an incorporated city on July 11, 1900.

Economy

Lemoore's major employers are still rooted in agriculture; however, economic development in the city created a boom in housing construction. The Lemoore Naval Air Station is the Navy's largest master jet air station projects and is home to the Pacific Strike Fighter Wing and its supporting facilities. The station projects an increase in base personnel through 2010. Major employers in Lemoore include SK Foods and Leprino Foods processing plants. Lemoore is also home to the newest campus of West Hills Community College.

Population

Lemoore's estimated 2012 population is 24,531. This represents a 20.9 percent increase over the population at the time of the 2000 U.S. Census (California Department of Finance 2012). Lemoore's population is 59 percent white, 7 percent black or African American, and 17 percent "some other race." Census data indicates that 31 percent of Lemoore's population is of Hispanic origin (U.S. Census Bureau 2010).

Hazard Identification

Representatives from the city of Lemoore identified natural hazards that could affect the city and developed hazard profiles based upon the countywide risk assessment and past events and their impacts. Definitions for the rankings used can be found in Element B.

City of Lemoore—Hazard Profiles

Hazard	Probability of Occurrence	Potential Magnitude/Geographic Extent	Significance
Dam Failure	Unlikely	Catastrophic	Medium
Drought	Occasional	Limited	Medium
Earthquake	Occasional	Critical	High
Extreme Heat	Highly Likely	Limited	Medium
Flood	Occasional	Limited	Low
Fog	Highly Likely	Negligible	Medium
Freeze	Likely	Negligible	Medium
Landslide	Unlikely	Negligible	Low
Soil Hazards: Expansive Liquefaction Erosion	Occasional	Negligible	Low
Tornado	Occasional	Limited	Low
Wildfire	Unlikely	Negligible	Low

Vulnerability Assessment

The vulnerability assessment analyzes the population, property, and other assets at risk to natural hazards. This section lists Lemoore’s assets at risk, including critical facilities and infrastructure; historic, cultural, and natural resources; and economic assets.

Assets Inventory

The table that follows lists the critical facilities and other community assets identified by representatives from Lemoore as important to protect in the event of a disaster.

City of Lemoore—Critical Facilities and other Community Assets

Facility	Replacement Value	Occupancy/Capacity
Fire Station – 210 Fox Street	\$3,500,000	
Police Station – 657 Fox Street	\$1,718,000	
Lemoore High School – 101 Bush Street	\$72,200,000	
Liberty Middle School – 1000 Liberty Drive	\$32,000,000	
Mary Immaculate Queen School – 884 N. Lemoore Avenue	\$18,000,000	
Meadow Lane Elementary – Quandt and Meadow Lane	\$18,000,000	
Cinnamon Elementary – 500 E. Cinnamon	\$18,000,000	
Lemoore Elementary – 573 Bush Street	\$18,000,000	
Engvall Elementary – 19 th and Cedar Lane	\$18,000,000	
Kings Christian School – 900 East D Street	\$18,000,000	
Cinnamon Municipal Complex – 711 Cinnamon Drive	\$10,300,000	

Facility	Replacement Value	Occupancy/Capacity
City Hall / Civic Auditorium – 119 Fox Street	\$4,656,000	
Highway 198 Infrastructure / Overpasses	California Department of Transportation	
Highway 41 Infrastructure / Overpasses	California Department of Transportation	
San Joaquin Valley Railroad		
Water wells and storage facilities		19.15Mgal/day
Lemoore Old Post Office	\$1,000,000	
Sarah Mooney Museum	\$600,000	
Leprino Foods	\$86,000,000 (two facilities combined)	

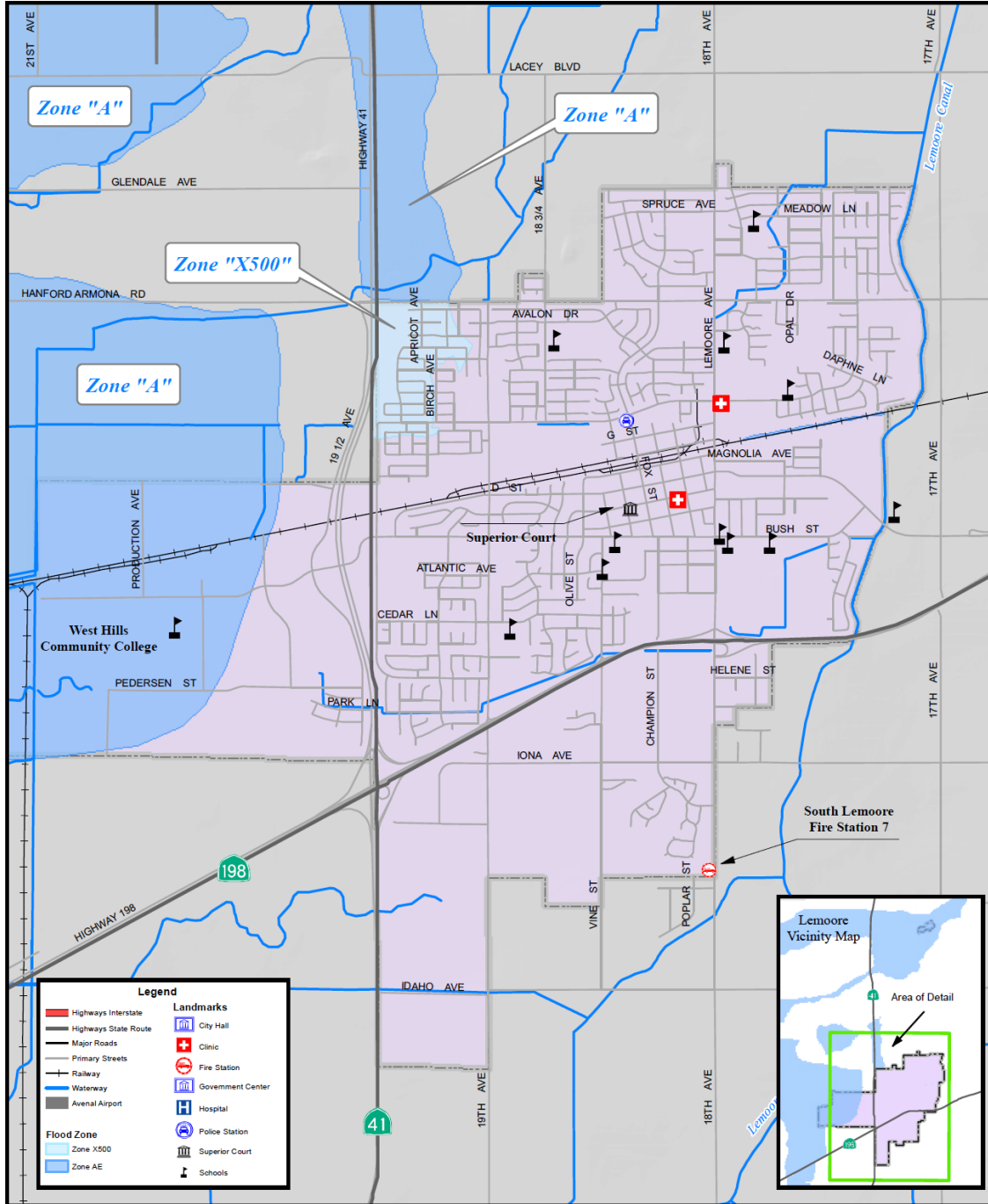
Estimating Potential Losses

The table below shows Lemoore’s total exposure to hazards in terms of population and the number and values of structures. Kings County Assessor’s data was used to calculate the improved value of parcels. GIS was used to quantify the number and value of structures in the 100-year (Zone A) and 500-year (X-500) flood hazard areas mapped by FEMA. More information on how these estimates were calculated can be found in Element B.

City of Lemoore—Exposure to Hazards

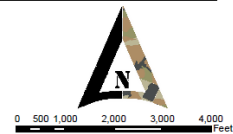
Lemoore	Population	Buildings	Value
Total Exposure (Earthquake)	25,531	8632	\$2,002,624,000
Flood: Zone A		0	*0
Flood: X-500		203	*\$31,125,037

Representatives from Lemoore discussed the impacts of different hazards to the city and determined that the impacts from drought, earthquake, extreme heat, fog, and freezes affect the city similar to other areas of the Kings County region and do not differ significantly to the descriptions found in Element B. The map on the following page shows the City of Lemoore’s Flood Hazards.



Print Date : October 7, 2012
Data Sources: Kings County, Cal EMA

**Kings County
Multi-Hazard Mitigation Plan
Lemoore Flood Hazard**



Future Development Trends

The City of Lemoore 2030 General Plan plans for 24,860 new residents over the next 23 years, which represents an annual growth rate of 3.1 percent. It plans for the majority of new residents to live in new residential neighborhoods in the northern, southern, and eastern part of the city, avoiding the flood hazard areas to the west and northwest. However, the city’s undeveloped, northwestern industrial complex lies in a 100-year floodplain.

CAPABILITY ASSESSMENT

Capabilities are the programs and polices currently in use to reduce hazard impacts or that could be used to implement hazard mitigation activities. The assessment is divided into four sections: regulatory, administrative and technical, fiscal, and outreach and partnerships.

Regulatory Capability

The table below lists planning and land management tools typically used by local and tribal jurisdictions to implement hazard mitigation activities and indicates those that are in place in Lemoore.

City of Lemoore—Regulatory and Planning Capabilities

Regulatory Tool	Yes/No	Comments
General plan	Yes	Updated in 2008
Zoning ordinance	Yes	
Subdivision ordinance	Yes	
Site plan review requirements	Yes	
Growth management ordinance	Yes	
Floodplain ordinance	Yes	
Other special purpose ordinance (stormwater, water conservation, wildfire)	Yes	Stormwater and water conservation plans
Building code	Yes	2001 California Building Code parts 1 and 2 referencing the 1997 Uniform Building Code
Fire department ISO rating	Yes	
Erosion or sediment control program	Yes	
Stormwater management program	Yes	
Capital improvements plan	Yes	
Economic development plan	Yes	
Local emergency operations plan	Yes	This plan will be updated in 2013/14 in coordination with the Kings County update.

Administrative and Technical Capability

The table below identifies the personnel resources responsible for activities related to mitigation and loss prevention in Lemoore. A summary of technical resources follows.

City of Lemoore—Personnel Capabilities

Personnel Resources	Department/Position
Planner/Engineer with knowledge of land development/land management practices	Contracted city engineer from Quad Knopf Consulting
Engineer/Professional trained in construction practices related to buildings and/or infrastructure	Contracted city engineer from Quad Knopf; Public Works – Construction Superintendent
Full time building official	Public Works– Director
Floodplain Manager	Planning – Chief Planner
Emergency Manager	Police Department – Police Chief
Grant writer	Various departments
Other	

Fiscal Capability

The following table identifies financial tools or resources that the city could potentially use to help fund mitigation activities. There are currently no specific funding sources for hazard mitigation.

City of Lemoore—Available Financial Tools and Resources

Financial Resources	Accessible/ Eligible to Use
Community Development Block Grants	Yes
Capital improvements project funding	Yes
Authority to levy taxes for specific purposes	Yes
Fees for water, sewer, gas, or electric services	Yes
Impact fees for new development	Yes
Incur debt through general obligation bonds	Yes
Incur debt through special tax bonds	Yes
Incur debt through private activities	No
Withhold spending in hazard prone areas	Yes

Outreach and Partnerships

The city could not identify any public outreach or other community partnerships related to hazard mitigation.

GOALS AND OBJECTIVES

The city of Lemoore adopts the hazard mitigation goals and objectives developed by the Planning Team and described in Element B.

MITIGATION ACTIONS

The planning team for the city of Lemoore identified and prioritized the following mitigation actions based on the risk assessment. Background information as well as information on how the action will be implemented and administered, such as ideas for implementation, responsible office, partners, potential funding, estimated cost, and timeline also are described.

2012 MITIGATION ACTIONS

Mitigation Action: Lemoore #1—Public Education

Current Status: Partially completed and carried over to 2012 plan (See Remarks box)

Action:	Develop and implement a comprehensive strategy to improve ongoing public education regarding natural hazards and risk.
Jurisdiction:	City of Lemoore
Priority:	High
Issue/Background:	The lack of public knowledge about hazards and preparedness was identified in this planning process as an important issue to address. Providing public information and training on hazards, risks, and individual and household preparedness could greatly reduce losses during emergency events.
Ideas for Implementation:	Establish training and information that can be delivered through presentations to the widest variety of groups and media Educate citizens about risks in Lemoore and Kings County Encourage families to have kits, plans, and drills to test their plans. Establish a Citizen Emergency Response Team (CERT) program in the city, which would be integrated with the county's program
Responsible Office:	Police Department
Partners:	City of Lemoore (Council and Staff), local businesses, schools, church and service groups, media
Potential Funding:	Hazard Mitigation Grant Program, Pre-Disaster Mitigation Program, U.S. Department of Homeland Security grants, private foundation grants, California Office of Emergency Services
Cost Estimate:	To be determined at time of grant requests
Benefits: (Losses Avoided)	<ul style="list-style-type: none"> • Potentially fewer lives lost and property damaged due to improved community preparedness • Quicker recovery of community due to prior preparation
Timeline:	Implement program within two years
Completed by:	Wes Roberts, Lemoore Police Department, Sergeant
Remarks:	<i>Project Disposition: At the September 27th workshop this project was reviewed by the LHMP Planning Team. This project has been partially accomplished. The committee agreed to carry this project forward for a more comprehensive public education program on disaster preparedness.</i>

2007 MITIGATION ACTIONS

Mitigation Action: Kings County—Long-Term Water Supply

Current Status: Overtaken by Events and Dropped (See Remarks box)

Action:	Improve coordination, planning, and investment in long-term water supplies to meet demands of ongoing growth and development.
Jurisdiction:	Multi-Jurisdictional
Priority:	High
Issue/Background:	Counties within the central and southern San Joaquin Valley region are experiencing tremendous growth as a result of low land costs, affordable housing, and low mortgage interest rates. This growth surge along with depleting surface and ground water supplies and projected outlook of global warming may severely cripple the available water supplies to Kings County during years of drought. Other regions are currently working on regional water management plans to receive bond funds for water capacity building projects.
Ideas for Implementation:	The Kings County Water District has attempted to coordinate proactive water capacity building programs and projects to address the future needs of the county's agricultural, rural, and urban water needs. This effort should be built upon to develop a water management plan that covers Kings County. The plan should incorporate a countywide strategy for conservation programs, recycled water reuse programs, programs that build additional recharge and storage, and policies that work to retain existing surface water rights within the county for future use. The Kings County portion of the San Joaquin Valley Regional Blueprint may provide an appropriate avenue to address this planning effort.
Responsible Office:	Kings County Planning Agency to take the lead until another more appropriate agency or joint powers authority can take over
Partners:	Cities of Avenal, Corcoran, Lemoore, and Hanford; special districts; water and irrigation districts; Local Agency Formation Commission of Kings County; and Kings County Association of Governments
Potential Funding:	Possible grant and bond funds through recent State Propositions.
Cost Estimate:	\$60,000 to \$80,000 for a countywide water capacity study and \$10,000 to \$45,000 for jurisdiction implementation of planning policy recommendations.
Benefits: (Losses Avoided)	\$1000s in potential agricultural and other resource losses avoided over the long term during years of severe drought. \$1000s in the reduction of emergency responses and recovery supplies for cities and communities unprepared and left without adequate water supplies for their residents.
Timeline:	Countywide water management plan to be completed in three years, then ongoing efforts
Completed by:	Kings County Planning Department
Remarks:	<i>Project Disposition: At the September 27th mitigation strategies workshop this project was reviewed by the LHMP Planning Team. The long- term water supply has been overtaken by events. The local project has been co-opted by a multijurisdictional project in</i>

	<p><i>cooperation with the State Department of Water Resources. This Project will cover the work within Kings County as well as several adjacent counties that share the same aquifer and watershed.</i></p>
--	--

Mitigation Action: Lemoore—Assessment of Critical Infrastructure
Current Status: Completed (See Remarks box)

Action:	Assess vulnerability of critical infrastructure and lifeline utilities, including water distribution systems, to identify and prioritize projects for multi-hazard risk reduction.
Jurisdiction:	City of Lemoore
Priority:	High
Issue/Background:	Public agencies need to constantly evaluate and plan for improvements that deliver the best service level available while remaining cost effective. With the advent of new techniques and technology to evaluate and identify weak links within the infrastructure of city services to further strengthen and mitigate shortages in design and/or function.
Ideas for Implementation:	Evaluate systems starting with water storage and distribution system. Once weaknesses are identified, potential projects for addressing them will be identified, prioritized for funding, and integrated into the city's capital improvements plan, water master plan, and other relevant plans.
Responsible Office:	Lemoore Office of the City Manager
Partners:	All city department directors
Potential Funding:	Hazard Mitigation Grant Program, Pre-Disaster Mitigation Program, other U.S. Department of Homeland Security grant programs, current city revenue for services
Cost Estimate:	
Benefits: (Losses Avoided)	Prevent damages and losses due to interruptions in services.
Timeline:	Five years
Completed by:	Wes Roberts, Lemoore Police Department, Sergeant
Remarks:	<i>Project Disposition: At the September 27th workshop this project was reviewed by the LHMP Planning Team. This Project has been completed by all jurisdiction subject to this plan.</i>

Mitigation Action: Lemoore—Vulnerable Populations
Current Status: Completed (See Remarks box)

Action:	Develop a program or system for supporting vulnerable populations during emergency events
Jurisdiction:	City of Lemoore
Priority:	High
Issue/Background:	There are currently few or no mechanisms in place to assist vulnerable populations in Lemoore during emergency events. Many citizens within these groups are unidentified.
Ideas for Implementation:	<ul style="list-style-type: none"> • Work with local agencies, businesses, and nonprofit groups that have contact with specific populations to identify issues and potential strategies to reduce risk to vulnerable populations during emergencies. • Contact other municipalities to obtain their answers to this situation and integrate success stories in our action plan. • Integrate program with the emergency operations plan, perhaps as an annex.
Responsible Office:	Lemoore Parks and Recreation Department
Partners:	All departments within the city of Lemoore
Potential Funding:	State and federal councils on aging, nonprofit organizations, Lemoore General Fund, in-kind/staff time
Cost Estimate:	
Benefits: (Losses Avoided)	<ul style="list-style-type: none"> • Improved emergency response capabilities • Reduced risk to vulnerable populations during emergency events
Timeline:	Program will be developed and implemented within two years
Completed by:	Wes Roberts, Lemoore Police Department, Sergeant
Remarks:	<i>Project Disposition: At the September 27th workshop this project was reviewed by the LHMP Planning Team. This Project has been completed by all jurisdictions subject to this plan.</i>

Mitigation Action: Lemoore—Municipal GIS Program

Current Status: Completed and ongoing (See Remarks box) moved to 2012 projects

Action:	Assist in establishing a centralized, inter-jurisdictional GIS program in partnership with the County of Kings to improve all phases of emergency management.
Jurisdiction:	City of Lemoore
Priority:	Medium
Issue/Background:	Lemoore has identified the need for implementation of GIS in all phases of emergency management. The implementation will provide for a timelier response to the needs of our community and improved understanding of hazards and vulnerabilities.
Ideas for Implementation:	<ul style="list-style-type: none"> • Purchase technical equipment to use technology • Improve staff capabilities • Obtain training for emergency personnel to optimize benefits of GIS during emergency events
Responsible Office:	Planning Department
Partners:	Kings County Planning Department, Cities of Hanford, Corcoran, Avenal, and Tachi Tribal Council
Potential Funding:	Grant money from FEMA/Department of Homeland Security, ESRI
Cost Estimate:	\$20,000 to contract with county GIS services in fiscal year 2007-2008. Additional costs for equipment and training needs.
Benefits: (Losses Avoided)	<ul style="list-style-type: none"> • Better use of available resource • Improved risk assessment • Quicker assessment during emergencies
Timeline:	Establish GIS support agreement with county in fiscal year 2007-2008. Aerial imagery update in summer 2007. Web application in fiscal year 2007-2008.
Completed by:	Wes Roberts, Lemoore Police Department, Sergeant
Remarks:	<i>Project Disposition: At the September 27th workshop this project was reviewed by the LHMP Planning Team. The inter-jurisdictional GIS project is in progress. The County has been completely mapped; Hanford and Avenal have joined in on the project contracting with County GIS to meet their mapping needs. The project is planned to expand to include all the incorporated Cities (Lemoore and Corcoran) and continue to create an integrated countywide GIS system and database.</i>